



Hand Surgery Illustrated

[This Portion Shows Graphic Material and is intended for physicians only](#)

Brown Cannulated Screw Technique for Bennett's Fracture

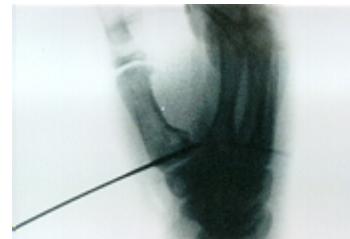
Finally, the cannulated screw system you asked for... from Instratek, Inc.



Step 1

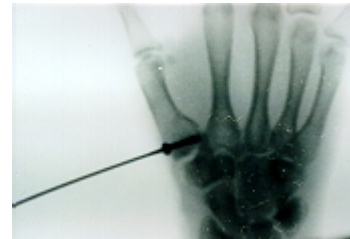
Through a dorsal minimal incision the **Threaded Guide Pin** is placed with c/arm control.

Reduction and compression at the fracture site is facilitated by the **Threaded Guide Pin**.



Step 2

The combination depth **Gauge/Countersink** instrument is used and the appropriate length screw selected.



Step 3

The Cannulated Self-Tapping screw is placed.

